

Falcon[®]

The Premier Line of Wireless
Data Collection Computers
For Supply Chain Management



Falcon® Mobile Computers - Streamlining The Supply Chain

Every step through the supply chain has data that needs to be captured, information that needs to be processed, and materials that need to be tracked. Whether it's raw materials for a manufacturing process, warehouse inventories, or products in the distribution channel, all must be effectively managed in order to optimize supply chain efficiency and ensure that the right products get to the right destinations, at the right time.

PSC's Falcon® line of wireless terminals and computers get this job done. Fast. Efficiently. Cost-effectively. Falcon® portable, vehicle and fixed station terminals and scanners enable the collection of critical business data at every point in a supply chain.

Additionally, as a Cisco® Premier Certified Partner, PSC is able to integrate Falcon terminals with Cisco Wi-Fi™ 802.11b wireless LAN products enabling the deployment of secure, high performance wireless networks.

Whether the need is for terminal emulation, support for DOS or Windows® CE-based applications, or just scanning, a comprehensive solution can be created using PSC's Falcon® wireless terminals.





Falcon® 4400 Series

Top-of-the-Line Laser & Imaging Performance In Windows® CE .NET Handhelds

The Falcon® 4400 series packages the power of the latest computing technology, large color display, and laser (1D) and imaging (1D and 2D) scanning in rugged, ergonomic mobile computers.

Falcon 4400s are designed to excel in distribution center, warehouse and retail in-store environments. Coupled with a wide range of scanning options, low operating temperature specification, loud speaker volume, large color display and an IP54 environmental seal rating, the Falcon® 4400s are well suited to withstand the rigors of most commercial and industrial environments.

Inside the 4400 series are cutting edge technologies from mobile and wireless industry leaders. Featuring an Intel® XScale™ processor, Cisco wireless technology and the Microsoft® Windows CE .NET operating system, the Falcon 4400 line of mobile computers have the power and flexibility to deploy sophisticated mobile applications.

Falcon® 4400 models with an integrated handle are ergonomically designed for scan-intensive applications. Non-handle models are contoured to fit comfortably in an operators hand for extended periods of fatigue-free data collection activities. The Falcon Management Utility and Falcon Desktop Utility are included with every unit providing remote management and configuration.



The Falcon 4400 shown with ruggedized overmold, tethered stylus and 48 key keypad.



Falcon 4400 series computers are also available in non-handle versions.



The Falcon 4400 shown with standard 26 key keypad.



Falcon® 4400 series computers are available with optional IBM 5250 terminal emulation keypad.

Falcon® 4200 Series



Powerful PDAs With Integrated Bar Code Scanner

The Falcon® 4200 series are compact rugged PDAs combining the flexibility of the Microsoft® Windows CE operating system with RF data communications and bar code scanning. The Falcon® 4200 series are designed for retail, warehousing and logistics applications where maximum performance is required in a compact form.

The Falcon® 4200 series incorporates top features including the latest in mobile computing technology from Microsoft and Intel, an integrated laser or linear imager bar code scanner, and a large 1/4 VGA color touch screen display. User accessible slots provide maximum flexibility. A built-in keypad provides additional ease of data entry.

Falcon® 4200 series PDAs are ready to run right out of the box with Microsoft® Pocket WordPad, Internet Explorer and Inbox (e-mail) applications. The Falcon® Management Utility and Falcon® Desktop Utility are included with every unit providing remote management and configuration.

Falcon® 4620

Rugged Vehicle Mount Windows® Computer

The Falcon® 4620 is designed for the harshest environments of the warehouse or loading dock. It features the latest Microsoft® Windows® operating system coupled with a powerful 800 MHz processor, and a choice of 2.4GHz 802.11b radios including Cisco Aironet or Symbol Spectrum24 HR.

The Falcon® 4620 boasts a bright 12.1" color touchscreen display, yet the installed system is similar in size to many 10" competing models. The 12.1" screen is ideal for touchscreen applications, and features a bright display, providing great readability both indoors and out.

The 800MHz processor combined with up to 512MB RAM provides the performance necessary for the most complex applications. Integrated wired Ethernet allows easy initial loading of the operating system and applications. And the shock resistant 20GB hard disk drive provides ample storage space, or for ultra-rugged applications a 2GB Flash with no moving parts is available.



The Falcon® 4620 low profile mounting system features keyboard and PSC's PowerScan® RF handheld scanner



Falcon® 345

Flexibility In Wireless Communication

Falcon® 345 data collection terminals set the standard for flexibility in wireless communications, providing connectivity for data collection applications where real-time information is critical.

The Falcon® 345 features a powerful 486/33 MHz microprocessor and 8 MB of RAM. The 345 can also be configured with any of the leading 2.4GHz spread spectrum wireless LAN solutions including Cisco Aironet or Symbol.

Additional flexibility comes with the wireless connection of Falcon 345 terminals into an existing legacy system. The Falcon® 345 comes with a choice of 25, 38, and 48-key keypads. A batch model, the Falcon® 340 is also available.



Falcon® 345 with standard 38-key alphanumeric keypad



Keypad configurations available with the Falcon® 345

48-key full alphanumeric

25-key large numeric

Falcon® 335

Wireless Data Collection In The Palm Of Your Hand

The Falcon® 335 excels in data collection throughout the supply chain where real-time access to data is required. Its internal antenna is protected and its 2.4GHZ spread spectrum radio options include Cisco Aironet or Symbol radio support. In addition, the Falcon® 335 features a powerful 486/33 MHz microprocessor and 8 MB of RAM.

Open standards, powerful applications and ease of use allow Falcon® 335 terminals to integrate seamlessly into the supply chain of companies involved in retail, warehousing, distribution, logistics and manufacturing. There are two keypad options; the standard 38-key alphanumeric and the 25-key large numeric keypad.

A batch model, the Falcon® 330 is also available.



The Falcon® 335 is available with either a standard 38-key full alphanumeric or 25-key large numeric keypad

Falcon® 325

Real Value In A Wireless Data Collection Terminal

The Falcon® 325 wireless data collection terminal is ideal for data collection throughout the supply chain where real-time access to data is required. The Falcon® 325 is rugged enough for the warehouse and ergonomically designed for ease of use. The Falcon® 325 is equipped with a 16-line screen, 486 class processor, 33MHz operating speed, integrated scanning and a user-accessible PC Card slot. Open standards, powerful applications and ease of use allow the 325 to integrate seamlessly into the supply chain of companies involved in logistics, manufacturing, retail, warehousing and distribution. Also available is the Falcon® 320 for batch data collection solutions.



Falcon® 625

Falcon® 515

Added Durability In DOS Vehicle Mount & Fixed Station Computers



The Falcon® 625 is designed to excel in the harshest environments. Equipped with a IP66 sealed enclosure, the 625 is highly resistant to extreme temperature, vibration and impact.

The Falcon® 625 has a powerful 486 class processor and operates under DOS 6.22. The 625 comes equipped with an EL super bright VGA display and the integrated sixty key keyboard is backlit. Available keyboard configurations include QWERTY or ABCD.

The Falcon® 625 can be configured with any of the leading 2.4GHz spread spectrum wireless LAN solutions including Cisco Aironet or Symbol.



The Falcon® 515 fixed station computer features a 15 line x 40 character color or monochrome display, an IP54 enclosure rating, 2PC card slots, 2 serial ports, and 2 input ports for a variety of devices such as PowerScan® handheld scanners or mag stripe readers. The Falcon® 515 also features enhanced, relay-protected digital I/O ports to control devices such as warehouse carousels, light tables, locking mechanisms, and more for a maximum of automation flexibility.

The Falcon® 515 has a 486 class processor and operates under DOS 6.22. The 515 comes standard with 8MB of RAM, 2MB of Flash ROM, two internal PCMCIA Type II slots and a 69 key QWERTY keypad.



Falcon® PT40

Entry-Level Data Collection In A Compact Package

The Falcon® PT40 is an entry-level, pocket-sized bar code data collection device sized to fit in a shirt pocket or on a belt clip like a cell phone. The PT40 is designed specifically for retail-in-store or light industrial applications such as cycle counting, shelf and price management, item tracking and order entry.

The lightweight (4.2oz) Falcon® PT40 features an integrated laser and rechargeable Lilon battery. The PT40 comes with software pre-loaded enabling out-of-the-box scanning and data collection.

Also included with the PT40 is a Windows® Program Generator allowing for the creation of complete applications within a few hours.



Falcon® TopGun®



Cost-Effective Reliable Performance

TopGun® is a cost-effective integrated laser scanning solution. It's rugged one-handed design gives durable, reliable performance and freedom of movement, even in the most demanding industrial work environments. TopGun® consists of a portable data collection terminal integrated with a laser module. TopGun® is lightweight and easy to use. It operates like any other handheld laser – just aim it and pull the trigger. LEDs located on the back of the scan head indicate laser activation and good reads. An audible tone also indicates scanning success. TopGun® easily scans bar codes on flat, curved or irregular surfaces at distances from 2.5 to 36" / 6.0 to 91.0cm.

Accessories



FALCON 4400 SERIES



Serial Printer Adapter



Single Slot Dock With Spare Battery Charger



Four Slot Dock With Spare Battery Charger



Four Slot Battery Charger



Tethered Stylus Kit



Single Slot Battery Charger



Lilon Rechargeable Battery



Vehicle Mount Dock & Charger



Rotational Ram Ball Assembly for Vehicle Mount Dock



Softcase



Holster



Belt & Clip for Holster



FALCON 4220



Ethernet Module for Single Slot Dock



4 Slot Ethernet Dock



GPRS CF Modem



Lilon Rechargeable Battery



Single Slot Dock



4 Slot Lilon Battery Charger



Car Charging Adaptor



Triggered Handle



Holster



High-Capacity Lilon Rechargeable Battery & Cover



FALCON 4620



NEMA 4 Standard Keyboard



NEMA 4 5250 Keyboard



Rotational Ram Ball Assembly



Top Mount Swing Arm Bracket & Computer Back Plate



Keyboard Tray Bracket



Wall Mount Swing Arm Bracket



Scanner Tray Bracket



Four Slot & Single Slot Docks

Single Slot Battery Charger

Four Slot Battery Charger

Vehicle Mount Holster

Hip Holster

Softcase with Beltclip

FALCON 340/345



Four Slot & Single Slot Docks

Single Slot Battery Charger

Four Slot Battery Charger

Holster

Belt for Holster

Soft Case

FALCON 330/335



Four Slot & Single Slot Docks

Vehicle Mount Cradle

Holster

Belt for Holster

Soft Case

FALCON 320/325



Single Slot Dock

Soft Case

Spare Belt Clip

Lilon Rechargeable Battery

Power Supply

Charging/Comm. Cable

FALCON PT40



Single Slot Dock

Single Slot Battery Charger

Four Slot Battery Charger

Soft Case with Strap

Belt Clip

FALCON TopGun



Mounting Bracket

Cherry US Keyboard

Mounting Bracket (Cherry)

NEMA 4 Keyboard

Mounting Bracket (NEMA 4)

IP66 Rugged Keyboard

FALCON 625

Software



Management & Development Tools For Enhanced Falcon® Flexibility

Falcon Management Utility (FMU) is a powerful administrative tool that centralizes the installation, maintenance, and management activities associated with a Falcon data terminal deployment. FMU comes with each Falcon 4400 series and 4220 mobile computer.

Falcon Desktop Utility (FDU) provides a mechanism to configure the user environment on Falcon Windows CE .NET portables, including Windows CE accessibility, Internet Explorer configuration, and the definition of a list of authorized applications. FDU comes pre-installed on Falcon 4400 series and 4220 portables.

Wavelink Studio is a wireless application development platform that allows developers to create robust wireless applications for mission-critical environments on any PSC Falcon® RF portable.

Wavelink Mobile Manager allows wireless administrators to deploy, maintain, and manage multi-vendor wireless LAN (WLAN) infrastructure with greater ease and efficiency.

Wavelink Avalanche is a client management system that automatically deploys software and configuration updates to a variety of vendor's mobile devices.

Wavelink Terminal Emulators provide industry standard terminal emulation capabilities for PSC's Falcon® data terminals. Includes VT100/220, HP 700/92, IBM 5250 and 3270 emulations.



Falcon® Services & Support



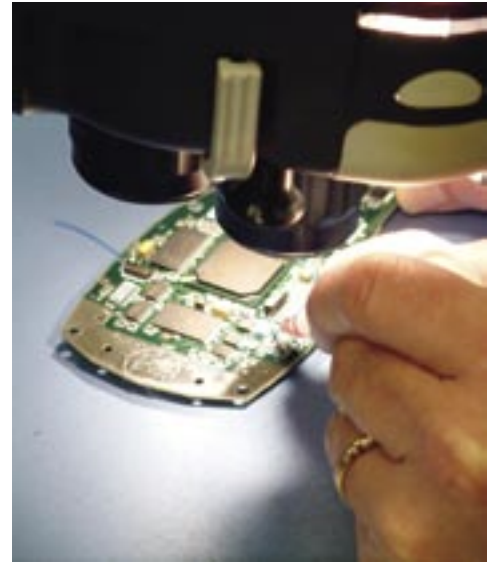
Professional Services, Technical Support And Maintenance Programs

Easy to understand, customized to your requirements and geared to provide lasting value and efficiency, PSC programs and service agreements can help you to get the results you want, on schedule and within your budget. When you purchase our best-in-class batch or wireless PDT's, PSC and our certified partners stand ready to assist you in getting the most for your data capture dollar.

PSC services include:

- Site Surveys
- Installation
- Configuration
- Custom Programming
- Training Development & Delivery
- Technical Services
- Web and Phone-Based Technical Support
- Next-Day Replacement
- Depot Repair Programs
- Maintenance Training and Authorization

... at PSC we understand that one-size does not fit all.





PSC Inc.
959 Terry Street
Eugene OR 97402-9150 USA
Tel: 800 695 5700 or 541 683 5700
Fax: 541 345 7140

www.psc.com

PSC Worldwide Sales and Service locations

European Headquarters
Europe/Middle East/Africa
PSC Bar Code Limited
Axis 3, Rhodes Way
Watford, England WD24 4TR
Tel: 44 1923 809500
Fax: 44 1923 809505

Belgium
Tel: 32 2 414 74 09
Fax: 32 2 410 11 63

France
Tel: 33 1 64 86 71 00
Fax: 33 1 64 46 72 44

Germany
Tel: 49 6151 93580
Fax: 49 6151 935897

Italy
Tel: 39 0 39 629031
Fax: 39 0 39 6859496

Spain
Tel: 34 91 746 28 60
Fax: 34 91 742 35 33

Sweden
Tel: 46 4010 84 92
Fax: 46 4010 84 91

Asia Pacific Headquarters
PSC Hong Kong
12 Harcourt Road
Bank of America Tower 8th Floor
Hong Kong
Tel: 852 2 584 6210
Fax: 852 2 521 0291

Australian Headquarters
PSC Asia Pacific Pty Ltd
Unit 11
277 Lane Cove Road
North Ryde NSW 2113
Tel: 61 2 9878 8999
Fax: 61 2 9878 8688

Japanese Headquarters
PSC Japan K.K.
9F Gotanda Daiwa Bldg.
7-13-5 Nishigotanda
Shinagawa-Ku, Tokyo 141-0031
Tel: 81 3 3491 6761
Fax: 81 3 3491 6656

Latin American Headquarters
PSC Latin America
1110 Brickell Avenue
Suite 505
Miami FL 33131 USA
Tel: 1 305 539-0111
Fax: 1 305 539-0206

© 2005 PSC Inc. All rights reserved. PSC, Falcon, TopGun, PowerScan and the PSC logo are registered trademarks of PSC Inc. All other brand and product names are trademarks of their respective owners.